

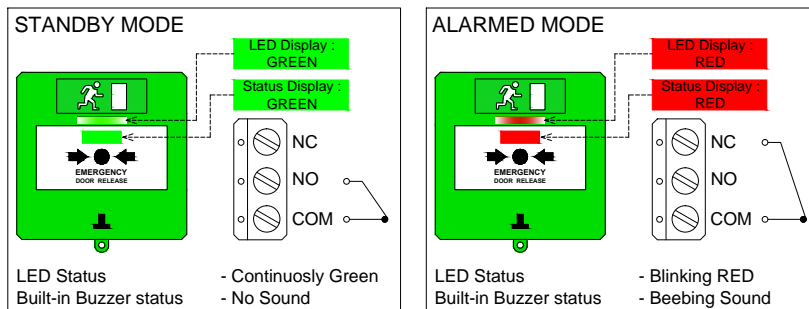
EMERGENCY DOOR RELEASE

Spec	Model	EDR819L-2	EDR819L-3	EDR819-1	EDR819-2	EDR819-3
Output Point (C,NC,NO)		2 Outputs	3 Outputs	1 Output	2 Outputs	3 Outputs
Voltage Input		12Vdc / 24Vdc (±5%)		N/A		N/A
Current Draw (Standby)		8mA (±5%)		N/A		N/A
Current Draw (Alarmed)		20mA (±5%)		N/A		N/A
Built-In Buzzer		Interval wailing max.60dB		N/A		N/A
Status Indicator		GREEN (Standby) / RED (Alarmed)		GREEN (Standby) / RED (Alarmed)		N/A
LED Indicator		GREEN (Standby) / RED (Alarmed)		N/A		N/A
Max Current Rating		125Vac / 3A		125Vac / 2A		
Weight		135g (±2%)		135g (±2%)		
Dimension		(L)86 x (W)86 x (T)42 (mm)		(L)86 x (W)86 x (T)42 (mm)		
Material		ABS ; PC (Transparent Part)		ABS ; PC (Transparent Part)		
Terminal Connector		Max. 2.0mm ² Cable		Max. 2.0mm ² Cable		



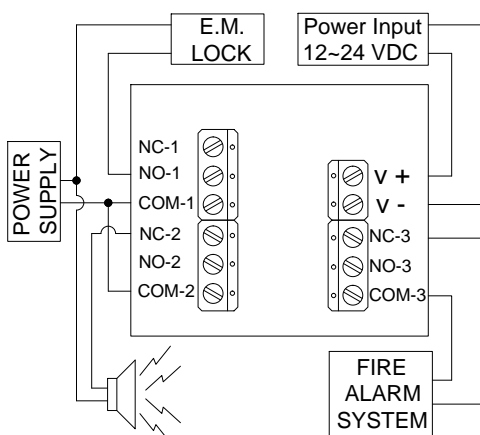
Features

1. Resettable design.
2. Built-in buzzer alarm. *(Only for model EDR819L)*
3. Lock hole for authorize personnel usage.
4. Universal key design to reset, test or install easily.
5. Status indicator Green or Red on the front.
6. LED indicator for easily exit in dark environment. *(Only for model EDR819L)*
7. High grade components with good quality guarantee.
8. Embedded or surface mounting options.
9. Available in color : Green or Blue
10. Easy to assemble, clip on design between casing, simple & fast installation & maintenance.



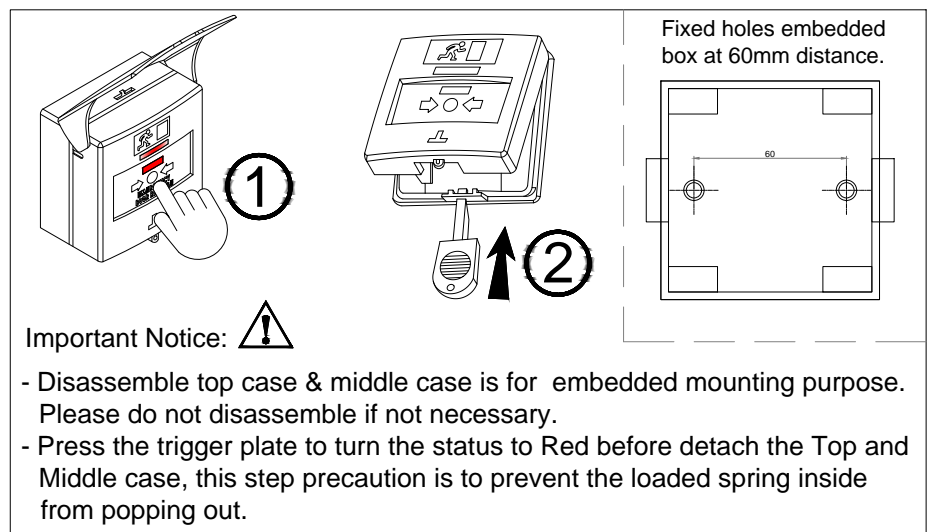
Note: LED display & buzzer are only applicable for model EDR819L

Basic Wiring Diagram Concept



Remark:

- Diagram above shown for 3 outputs model.
- Model 1 output mean only have 1NC, 1NO & 1COM terminal connection.
- **Power input are available only for model EDR819L.**

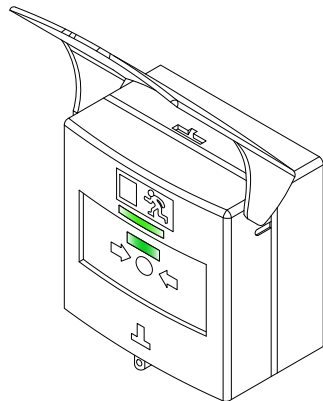


Disclaimer :

EBELCO reserve the right to go ahead with any modifications of models or features or price without fore warning. All the information and specifications stated in this document are current at the time of publication.

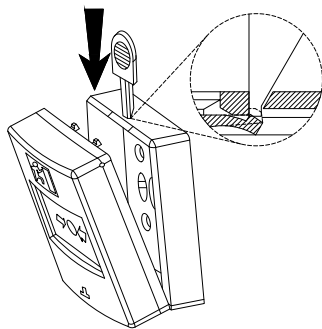
GENERAL INSTALLATION GUIDE

Surface Mount Instruction

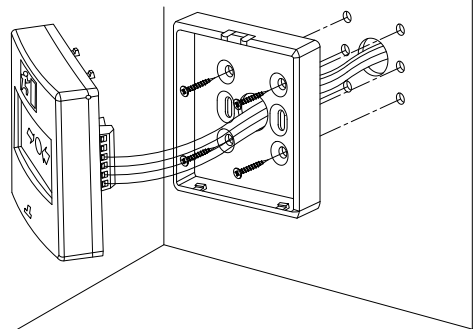


Complete Case & Cover

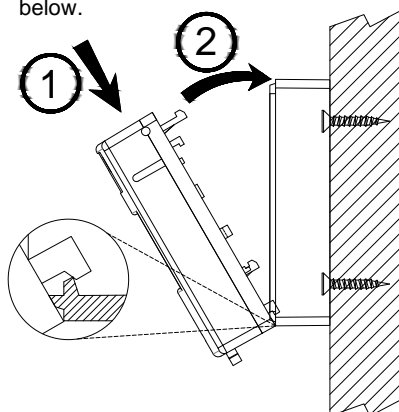
1. Use Key to disassemble Bottom Case & Middle Case.



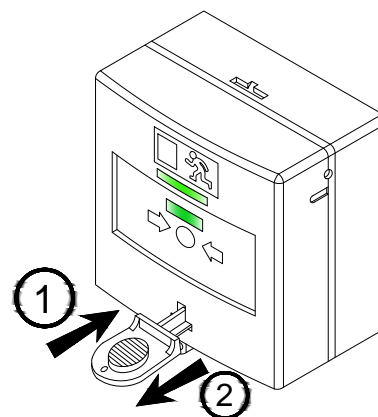
2. Mount the Bottom Case on the wall and connect the wires to the PCB output terminal.



3. Buckle in the middle case to the bottom case clipping as shown in the diagram below.

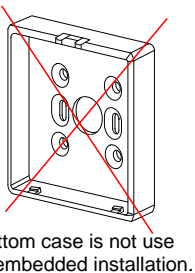
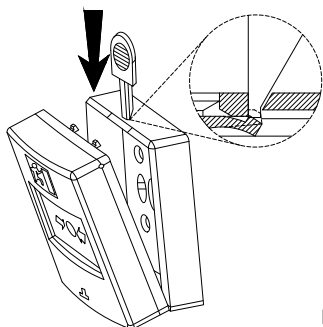


4. Insert the Key to reset the status indicator back to Green. Then pull out the Key.



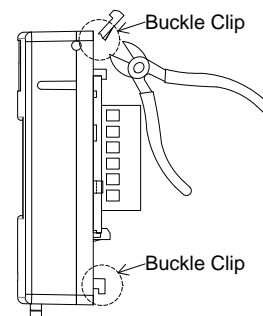
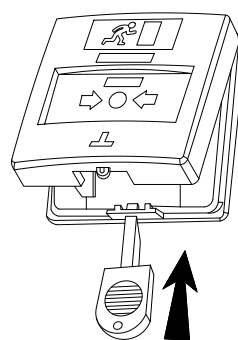
Embedded Mount Instruction

1. Use Key to disassemble Bottom Case & Middle Case.



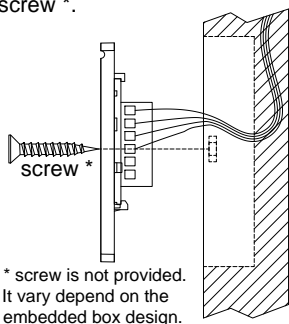
2. Use Key to disassemble Top case & Middle Case.

** See Important Notice. ⚠

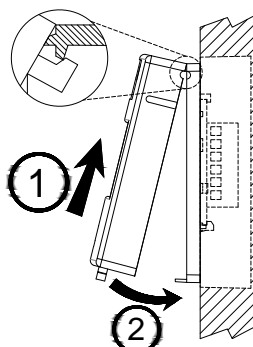


Note: Cut off the unused buckle clip portion if its blocking the embedded surface mounting.

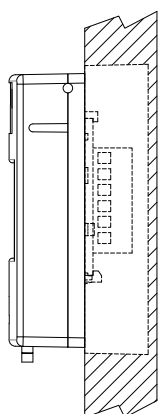
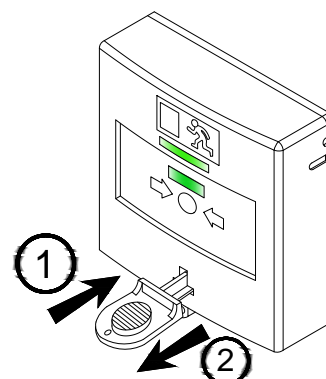
3. Connect all the wires to the PCB output point, then mount the middle case onto the embedded box with screw *.



4. Buckle up the clip between Top case & Middle case as shown in the diagram below.



5. Insert the Key to reset the status indicator back to Green. Then pull out the Key.



Lateral View